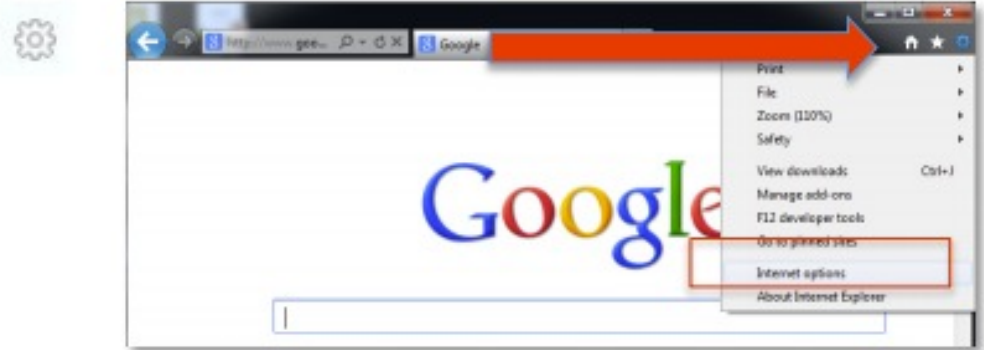


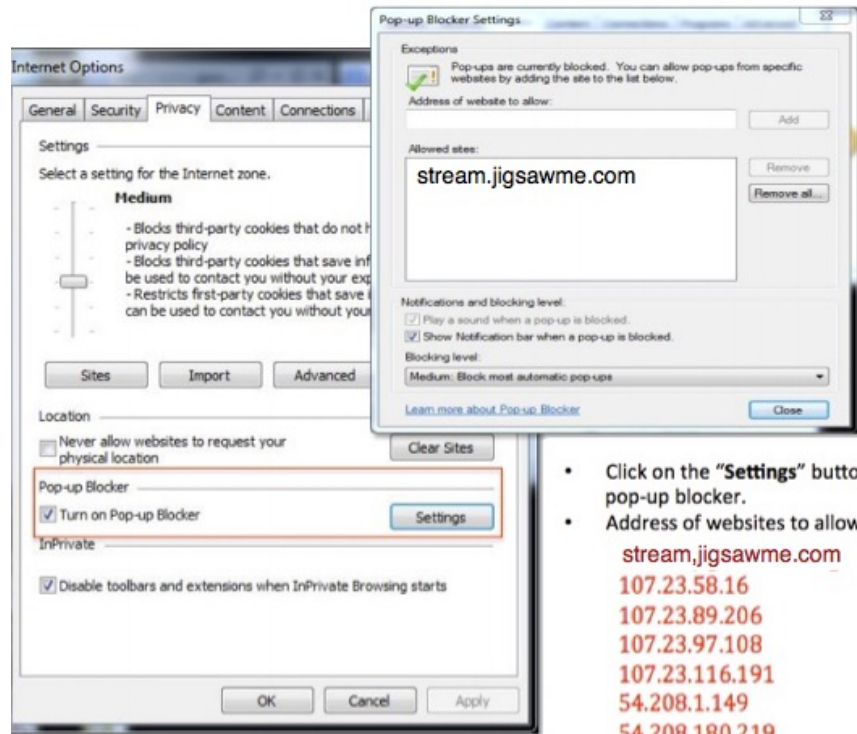
How To Add An Exception To Your Popup Blocker

- In Internet Explorer click on the **tools button** in the navigation bar
- Select the **“internet options”** from the dropdown menu.
- Select the **“Privacy”** tab.



Add These:

- stream.jigsawme.com
- 107.23.58.16
- 107.23.89.206
- 107.23.97.108
- 107.23.116.191
- 54.208.1.149
- 54.208.180.219



- Click on the **“Settings”** button for pop-up blocker.
- Address of websites to allow:
stream.jigsawme.com
107.23.58.16
107.23.89.206
107.23.97.108
107.23.116.191
54.208.1.149
54.208.180.219

Click OK, OK, and Close

In IE 7 and IE 8

Tools → Pop-up Blocker Settings → Add the list above separately in the “address of website to allow” and click “Add”